

The Birch

Features

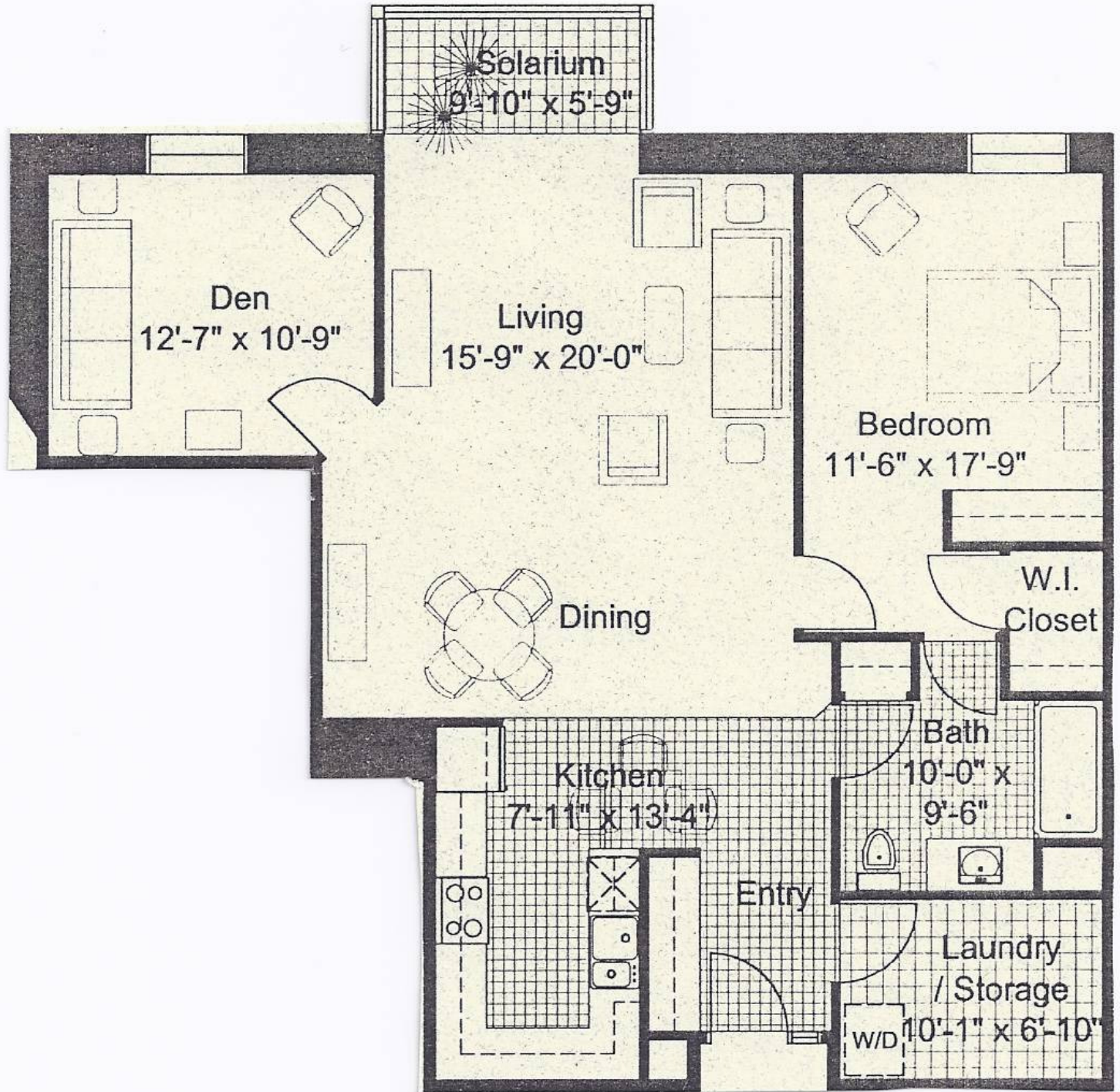
*1230 sq.ft

*1 Bedroom + Den

*1 Bath

*6 appliances

*Solarium



Evergreen Terrace
275 Main Street East, Grimsby, ON L3M 5N8
905-309-7888

www.evergreenterrace.ca evergreenterrace@bellnet.ca



Evergreen Terrace
275 Main Street East, Grimsby, ON L3M 5N8
905-309-7888

www.evergreenterrace.ca evergreenterrace@bellnet.ca

Evergreen Terrace
275 Main Street East, Grimsby, ON L3M 5N8
905-309-7888

www.evergreenterrace.ca evergreenterrace@bellnet.ca