

The Elm

Features

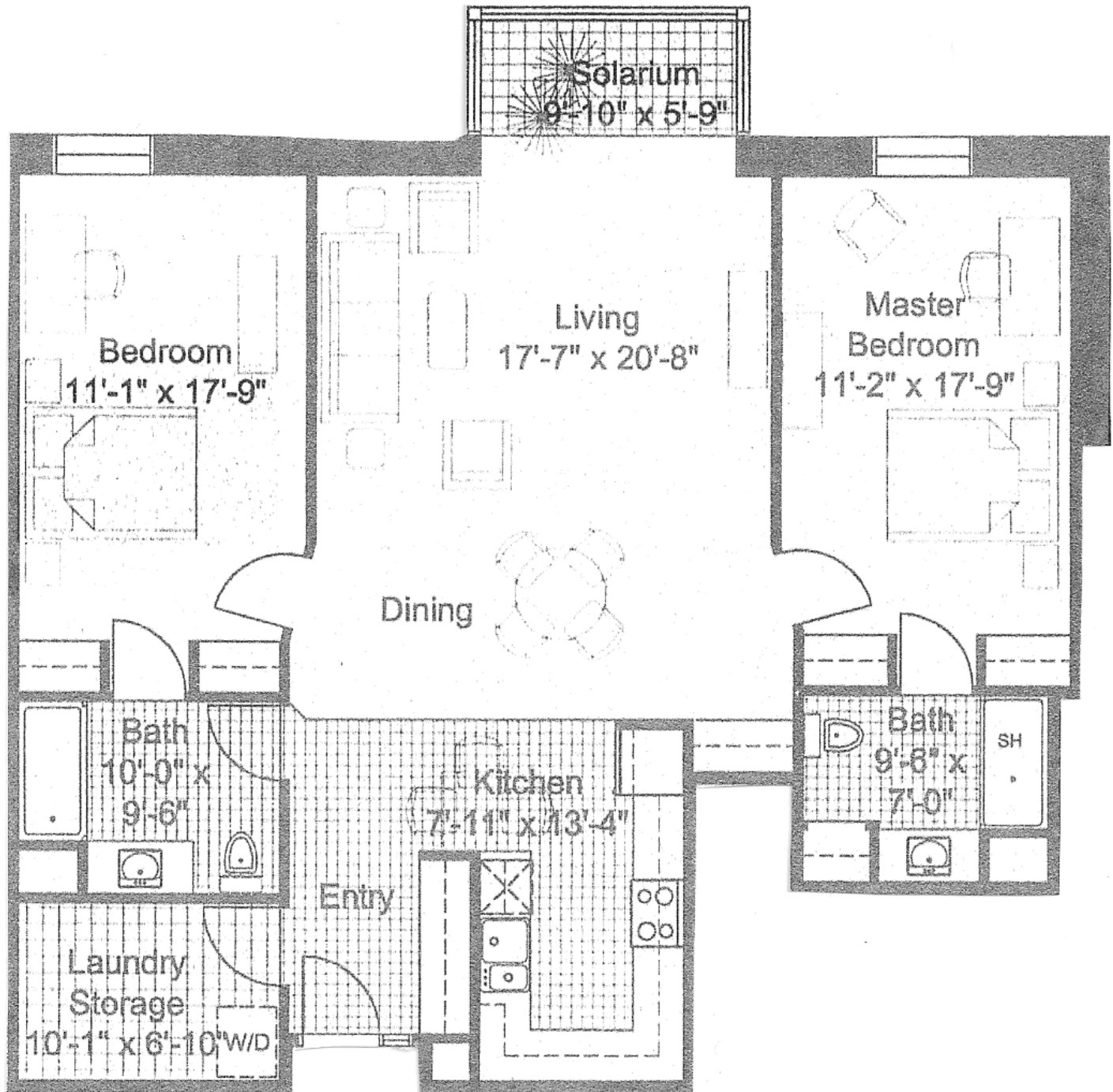
*1398 sq.ft

*2 Bedroom

*2 Bath

*6 appliances

*Solarium



Evergreen Terrace
275 Main Street East, Grimsby, ON L3M 5N8
905-309-7888

www.evergreenterrace.ca evergreenterrace@bellnet.ca



Evergreen Terrace
275 Main Street East, Grimsby, ON L3M 5N8
905-309-7888

www.evergreenterrace.ca evergreenterrace@bellnet.ca